



Real Time Crime Center Project Fast Facts

➤ Site Specifics

- Address: 757 Carolyn Ave, Columbus, OH 43224
- Parcel Size: 10.67 Acres
- Existing buildings will be demolished prior to new construction

➤ Project delivery

- Design / Bid / Build
- Emphasis on high performing, energy efficient and sustainable building
- MEP redundancies

➤ Main building to include:

- Real Time Crime center (RTCC)
- Emergency 911 Call Center (ECC)
- Emergency Operations Center (EOC)
- Technology communications support

➤ Overall Campus

- Design with the future in mind
- Increased site security & infrastructure
- Technology integration

➤ Project Timeline:

- 18 month design timeline
- 24 month construction timeline
- Award contract end of Feb 2023
- See Feasibility Assessment done by DLZ
 - Conceptualized renovating the existing building
- Coordination with City's Technology representative (tbd)



RTCC Project Design Scope

25% MBE/ WBE participation on design services

- Design Services to include:
 - Architectural and Engineering services
 - Energy modeling
 - Renderings
 - Public Safety technology integration
 - Coordination with City's Technology Owner's Rep (tbd)
 - Program Validation and coordination with multiple departments
 - Cost Estimating
 - Construction contract administration
 - Site presence during construction
 - Commissioning
 - Project Closeout
- *More exhaustive scope can be found in the RFSQ while the full scope of services will be defined in executed agreement.*



RTCC Project Overview

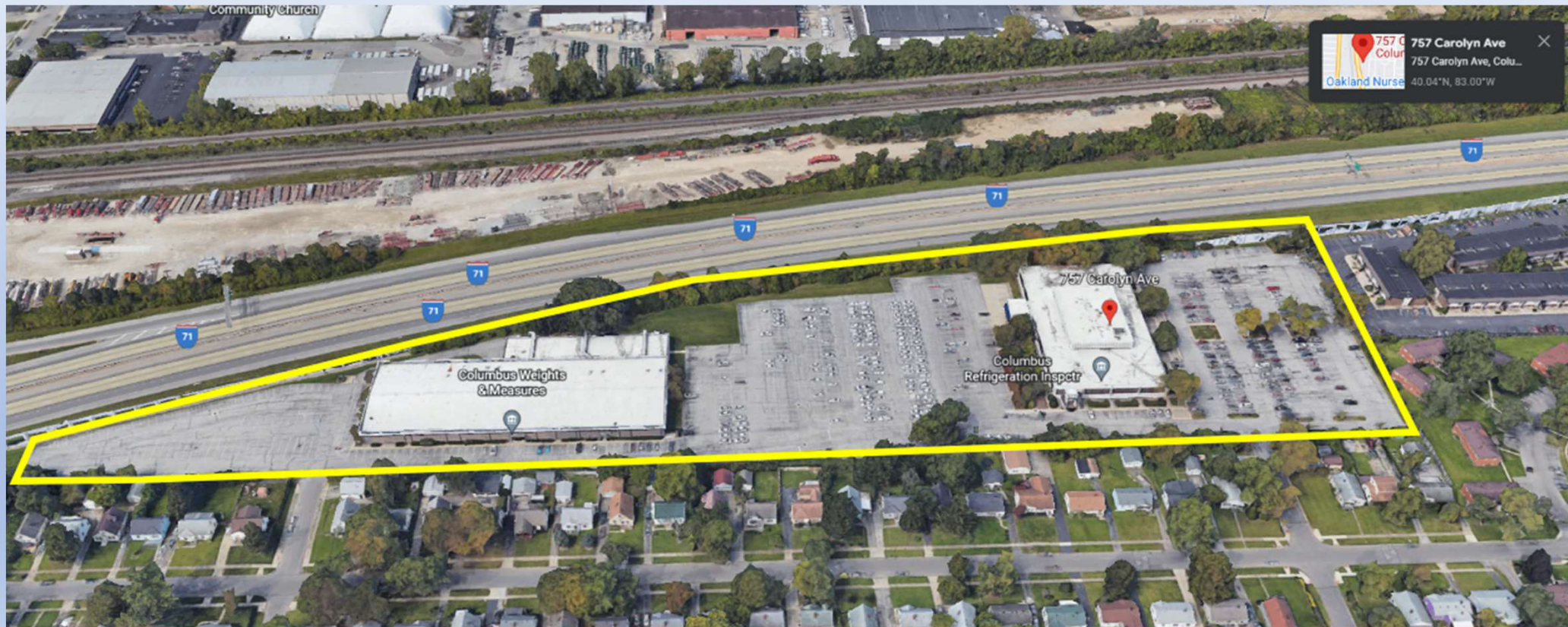
- Design & Construction of a new multi-use facility housing the new Real time Crime Center, Emergency 911 call center, Emergency Operation Center, IT Communications support
- Scope includes being mindful of future site development and space planning
- Sustainable, high-performance building design.
- The City is searching for a design team with proven experience in programming and designing multi-use secure safety facilities.
- Coordination of multiple city departments and surrounding communities' safety departments is anticipated.



RTCC Project Site

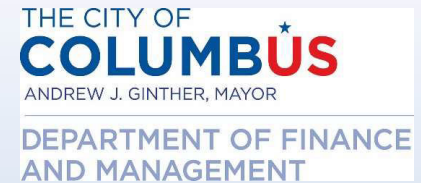
THE CITY OF
COLUMBUS
ANDREW J. GINTHER, MAYOR

DEPARTMENT OF FINANCE
AND MANAGEMENT





Police Substation Project Fast Facts



➤ Site Specifics

- Location: North side of Sullivant Ave. between Townshend & Columbia
- Parcel Size: 4.029 Acres
- Purchasing land from the state
- Parcel to be separated

➤ Project Timeline:

- 12-14 month design timeline
- 18 month construction timeline
- Award contract end of Feb 2023

➤ Main building & site to include:

- House Precinct 19 & CRT-3
- Community Center
- Office & Locker spaces
- Roll call, fitness and wellness spaces
- Covered parking for police vehicles
- Bike & equipment storage
- IT & secure file storage
- Whole house generator

➤ Project delivery

- Design / Bid / Build
- End goal is designing and building a high performing, energy efficient and sustainable building
- Energy efficiency goal: 35 EUI
 - Stretch goal of 25 or less



Police Substation Project Design Scope

20% MBE/ WBE participation on design services

- Design Services to include:
 - Architectural and Engineering services
 - Energy modeling (*major emphasis*)
 - Renderings
 - Program Validation and coordination with multiple departments
 - Cost Estimating
 - Construction contract administration
 - Site presence during construction
 - Commissioning
 - Heavy part of scope to include energy monitoring at substantial completion
 - Project Closeout
- *More exhaustive scope can be found in the RFSQ while the full scope of services will be defined in executed agreement.*



Project Overview

- Design & Construction of a new police substation that will house both Precinct 19 & CRT-3 (community response team)
- Scope includes project shall include all necessary design, engineering and construction contract administration services to construct a 12,000 to 15,000 SQ FT high performing, energy efficient facility that will house 19 Precinct and CRT-3 as well as a Community Center/ Room based upon Zone concepts as defined in guidelines using PERF* and IACP* standards
- Sustainable, high-performance, energy efficient building design.
- Energy goal of 35 EUI (energy usage intensity) with a stretch goal of 25 EUI
- The City is searching for a design team with proven experience in programming and designing police & public safety facilities



Police Substation Project Site

THE CITY OF
COLUMBUS
ANDREW J. GINTHER, MAYOR

DEPARTMENT OF FINANCE
AND MANAGEMENT

